



December 2006 - January 2007

The Same Page

Plough Library Newsletter · Christian Brothers University

Library Hours:

Mon-Thur: 7:45 am - 11:00 pm

Friday: 7:45 am - 4:30 pm

Saturday: Noon - 4:00 pm

Sunday: 2:00 pm - 11:00 pm

Hours may vary during holidays and breaks. Please call 321-3432 or check our website to verify hours.

Exam Hours:

Dec. 4-7, 11-14: 7:45 am - 12:00 am

Dec. 8, 15: 7:45 am - 4:30 pm

Dec. 9: 2:00 pm - 12:00 am

Dec. 16: 11:00 am - 3:00 pm

Holiday Hours:

Dec. 17: Closed

Dec. 18-21: 8:00 am - 4:30 pm

Dec. 22-Jan. 1: Closed

Jan. 2-5: 8:00 am - 4:30 pm

Contact the Library:

Telephone: 321-3432

E-mail: library@cbu.edu

Fax: 321-3219

Website: www.cbu.edu/library

Writing Center:

321-3360

In This Issue:

From the Director: RCL	1
Staff News	2
Instruction	2
Circulation & Acquisitions	2
Electronic Resources	3
Ross Gallery Schedule	3
New Books	4
The Night Before Finals	4

The Same Page newsletter is published by Plough Library at Christian Brothers University
Deborah Babb, ed.
Contact: dbabb@cbu.edu
Assoc. eds.:

Benjamin Head, Margaret Cardwell
Vol. 2, Issue 3, 2006

From the Director

Margaret Cardwell
mcardwel@cbu.edu
321-3432

RCL - Resources for College Libraries

Look what Santa brought us! The library has just acquired the latest bibliographical list of 65,000 core sources that college libraries should own. Resources for College Libraries replaces the older Books for College Libraries, which was last published in 1988.

The RCL is a collection of essential titles in 58 curriculum-specific subject areas. It is the collaborative work of 332 contributors who are librarians, subject specialists, and teaching faculty in American colleges and universities. The arrangement of the volumes is designed to reflect a subject taxonomy of the American undergraduate curriculum. Older editions of similar bibliographies were often arranged strictly by library classification scheme. The Dewey and Library of

Congress classification numbers do continue to be part of the record for each title. The record also includes information about the audience that may be interested in a title: general, lower or upper division undergraduate, and faculty.

The library staff is very excited to see what titles we do own and to get a better idea of what we should purchase. This tool will also be used to safeguard against weeding classic titles.

The editors of this seven volume set also suggest that students and faculty consult this source in order to see what the very best titles in their field might be.

Continued on page 2, RCL...



— @Your Library —

We have a beautiful new piece of art in the library, located in the front window by the printer. This large, multicolored glass disk was given to CBU by Gary Beecham, a glass artist whose work was recently featured in the Beverly and Sam Ross Gallery downstairs. This piece is especially striking at night when viewed through the window from outside the library.

Come by and have a look!

Gary Beecham
Appalachian
Landscape II, 2004

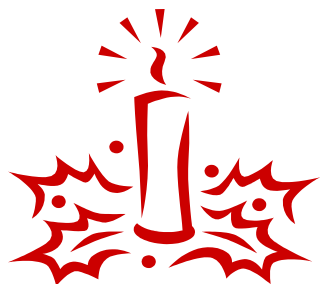


Continued from page 1, RCL...

Perusing a subject area is a good way to become familiar with new titles, and web and electronic resources that have been published recently. RCL may be used for building bibliographies for class syllabi and certainly for recommendation for purchase on those items that the library may not currently own.

The editors also hope that students will make use of these volumes as a map when they begin their research on a topic in that they will be able to relate the organization in the RCL to their own course study in the classroom. The seven volumes will be located in the library's Reference area. Please come by and have a look!

And the staff of the Plough Library wish each of you a very Merry Christmas and Happy New Year!



Instruction

Benjamin F. Head
321-4355
bhead@cbu.edu

The Instruction Program at Plough Library offers a variety of instruction sessions that faculty and students will find useful.

For Faculty:

- Want to discourage plagiarism in your students' writing assignments? Call 321-4355 and schedule an **Avoiding Plagiarism Session** for your class today!

- Support Information Literacy and Life-long Learning. Give your students the opportunity to polish their research skills. Call and schedule a **Research Instruction Session** @ 321-4355!

For Students:

INSTRUCTION SCHEDULE January & February 2007

Walk-In Classes:

Introduction to Plough Library & Database Searching

	Day	
Wednesday	Jan. 24	12:00 pm
Thursday	Jan. 25	11:00 am
Wednesday	Jan. 31	10:00 am
Thursday	Feb. 1	12:00 pm
Evening		
Tuesday	Jan. 23	5:30 pm
Tuesday	Jan. 30	5:30 pm
Tuesday	Feb. 6	6:00 pm

Tours:

Learn the layout of Plough Library

	Day	
Thursday	Jan. 18	11:00 am
Thursday	Jan. 25	2:00 pm
Thursday	Feb. 1	11:00 am
Thursday	Feb. 8	11:00 am
Thursday	Feb. 15	11:00 am
Evening		
Tuesday	Jan. 16	5:30 pm

Circulation & Acquisitions

Maya Berry
321-3554
mberry2@cbu.edu

Are you a movie buff that likes unique films and documentaries? Or, are you tired of the same generic things to rent at Blockbuster or Hollywood Video? Plough Library has videos and DVDs that you can check out for free as long as you bring them back on time!

Fines are higher on videos, so be sure to bring them back by their due date! They will incur a \$1.00 per day late charge. Videos have a three day rental period and only two may be checked out at a time.

Our video/DVD collection is located on the first floor of the library in the BucCup. Take some time to browse our collection, and ask a librarian if you need help finding something!



Faculty, we want your suggestions! Help us enhance our library collection to fulfill the research needs of your department. Let us know about books and other library materials that would benefit you and your students!

Did you know that there is a portion of the library budget set aside for each department every fiscal year? Contact your library liaison for more information or fill out the form we have on our website: <http://www.cbu.edu/library/forms/bkmat.htm>. Your library liaison can also answer any other question you may have about library services.

Don't know who your library liaison is? Find out on our website also at <http://www.cbu.edu/library/faculty/liaison.htm>.

Continued on page 3, Liaison...

Staff News

Margaret Cardwell, Benjamin F. Head and Deborah Babb attended the West Tennessee Academic Library Council (WeTALC) meeting on November 15, 2006 at UT Martin.

Continued from page 2, Liaison...

If you are not a member of faculty, you are more than welcome to suggest titles as well. Use this form: <http://www.cbu.edu/library/forms/suggest.htm>



Another end of a great semester at CBU means that your books are due back to the Plough Library!

Unless they have an earlier due date, please return all of your library materials by **December 16**.

We would like to get all of our library books back from students, faculty, and staff so that we can check their condition, complete any maintenance needed in the library catalog, and get them ready for check-out next semester. Please make every effort to return your books on time!

Electronic Resources

Deborah Babb
321-3422
dbabb@cbu.edu

Which Databases Should I Use?

Through Plough Library, the CBU community has access to over forty different online databases. Because we have so many databases, it can sometimes be difficult to know which ones to use for specific subjects. To remedy that, here is a quick guide to some of the best databases for research on various topics.

BEHAVIORAL SCIENCE

General Research: PsycINFO, PsycARTICLES, Academic Search Premier, JSTOR, Expanded Academic

ASAP

BUSINESS

General Research: Business Source Premier, LexisNexis, JSTOR, General Business File ASAP

Company Data and Market News: Morningstar and Mergent Online

Accounting: CCH Tax Research

Business Law: LexisNexis and Hein Online, CQ Researcher

EDUCATION

General Research: ERIC, Professional Collection, JSTOR, Primary Search, Academic Search Premier, Expanded Academic ASAP

HISTORY & POLITICAL SCIENCE

General Research: Academic Search Premier, JSTOR, ACLS History E-Book Project, Expanded Academic ASAP, Original Sources

Government & Military: HeinOnline, CQ Researcher, CQ Encyclopedia of American Government, Military & Government Collection, Military & Intelligence Database

LITERATURE & LANGUAGES

General Research: Literature Online Reference Edition, Literature Resource Center, Academic Search Premier, Expanded Academic ASAP, JSTOR

RELIGION & PHILOSOPHY

General Research: Religion & Philosophy Database, JSTOR, Academic Search Premier, Expanded Academic ASAP

Continued on page 4, Databases...

Still Need It?

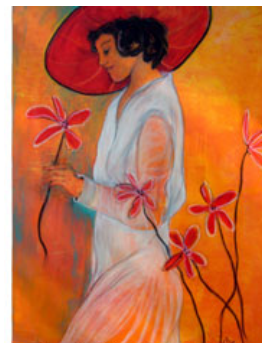


Renew It Online!

It's quick and easy! Just go to Plough Library's online catalog page at <http://zeus.cbu.edu>, and click on the My Account tab. Log in with your CBU ID number and last name. Then, follow the directions to renew your items.

Beverly & Sam Ross Gallery

NOV 3 - DEC 12, 2006



Pamela Kelso Craig, *Red Hat*

Pamela Kelso Craig Moments in Time

UPCOMING EXHIBITS

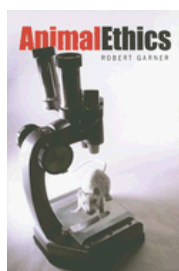
The Art of Jana Broussard Travis

Jan 19 - Feb 22, 2007

The Eye of Murray Riss

Mar 16 - May 12, 2007

New Books in the Library!



Animal Ethics
Robert Garner

—
Call Number:
179.3 G37 2005
New Books Shelf



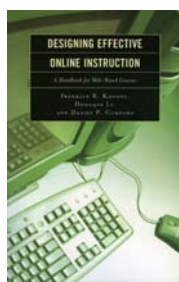
America's Uncivil Wars: the 60's Era
Mark H. Lytle

—
Call Number:
973.923 L98 2006
Level 3



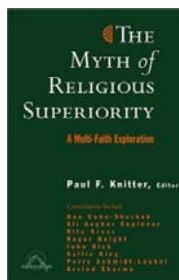
The Naked Brain
Richard M. Restak

—
Call Number:
612.8 R47n 2006
New Books Shelf



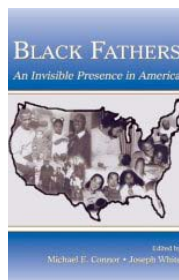
Designing Effective Online Instruction
Franklin R. Koontz

—
Call Number:
371.33 K66 2006
Level 3



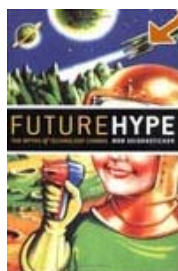
The Myth of Religious Superiority
Paul F. Knitter, Ed.

—
Call Number:
201 M98 2005
New Books Shelf



Black Fathers
Michael E. Connor &
Joseph White, Ed.

—
Call Number:
306.874 B53 2006
New Books Shelf



FututreHype: The Myths of Technology Change
Bob Seidensticker

—
Call Number:
303.48 S45 2006
New Books Shelf

Find more new books on our New Books shelves and in our catalog. In the catalog, at <http://zeus.cbu.edu>, simply click on the New Items tab to pull up a list of new books and other new materials including videos.

Continued from page 3, Databases...

SCIENCE & ENGINEERING

General Research: Academic Search Premier, JSTOR, Expanded Academic ASAP, Science Direct (abstracts), Scirus (free), DIALOG (see librarian)

Health Sciences: Health and Wellness Resource Center, Health Reference Center Academic, PubMed

Information Technology: Computer Database

Engineering: ASCE Publications CE Database (abstracts), Intute: Engineering E-Journals (free), Academic Search Premier, DIALOG (see librarian)

QUICK REFERENCE

Oxford Reference Online, xreferplus, Oxford English Dictionary (OED), Gale Virtual Reference Library, Funk and Wagnall's New World Encyclopedia

*Note: these databases and more may be accessed from the Databases page at <http://www.cbu.edu/library/databases/subject.htm>, except DIALOG (see a librarian for assistance).

The Night Before Finals

By Melissa Verble

'Twas the night before finals and all through the land,
students were sweating and wringing their hands.
The dorms were alight and keyboards were clacking,
pens all a blur and book spines were cracking.

Shakespearean sonnets and angle degrees,
Chromosome walking and steel Bantam Beams.

Figurate numbers and Hydraulic power,
Pari Passu and Tolkien's black tower.

Nighttime will pass, the classrooms soon ready.

The troops will all muster, eyelids so heavy.

Armed with revisions and full index cards,

Blue books and pencils prepared for the charge.

Good fortune to you from the Library staff.

Best wishes for all and, of course, a good nap.

BucCup



.50 per cup

HOURS:

Monday - Thursday, 8am to 11pm
Friday, 8am to 4:30pm

LOCATION:

Library - lower level

BucCup coffee & hot chocolate service ends for the semester on Friday, December 15 and restarts on January 8, 2007.