



# The Same Page

Plough Library Newsletter

Christian Brothers University

(see our online version at [www.cbu.edu/library](http://www.cbu.edu/library))

November/December 2004

### Regular Library Hours

- Mon-Thurs: 7:45 am-11:00 pm
- Friday: 7:45 am-4:30 pm
- Saturday: Noon-4:00 pm
- Sunday: 2:00 pm-11:00 pm

Hours may vary during holidays and breaks. Please call 321-3432 to verify hours, or check our website at [www.cbu.edu/library](http://www.cbu.edu/library).

### Contact the Library:

Telephone: 321-3432

E-mail: [library@cbu.edu](mailto:library@cbu.edu)

Fax: 321-3219

Website: [www.cbu.edu/library](http://www.cbu.edu/library)

### The Writing Center

The Writing Center is on the lower level of Plough Library, It is open Sunday-Saturday. Hours are posted on the door. Telephone: 321-3360

### In This Issue

Librarian Liaison Program.....	1
Science Direct Database.....	1
News from Departments.....	2
General Announcements.....	3
New Books .....	4
Fall Exam Hours.....	4

## **C**BU's Embryonic Librarian Liaison Program is Growing

The librarian-faculty liaison program at Christian Brothers University got off to a successful start this fall. The assigned librarians were able to meet with the deans and department chairs.

The presentations made by the librarians and the follow-up question and answer session resulted in enlightening discoveries and exchanges by those attending.

Since Plough Library has a fairly new library staff (three new librarians since February 2004), it was a great opportunity for them to meet the administrators and faculty of the various schools and departments. Prior to the liaison program, many members of the faculty were just voices and e-mails. Now, more faculty and librarians are on a first-name basis. Both faculty and librarians are realizing how beneficial it is for the groups to work closer together in a more organized and focused fashion.

Continued on page 4, Liaison



SCIENCE @ DIRECT

### **New Science Database Link**

A link to ScienceDirect is now included on our CBU Databases page. While CBU does not subscribe to the full-text version of ScienceDirect, anyone may search and view abstracts in ScienceDirect's vast electronic collection of science, technology, and medicine information. If you want the full-text article of an abstract you find, please see a librarian for assistance in obtaining the full-text article through interlibrary loan or pay-per-view purchase of the article.

In addition, ScienceDirect abstracts may be searched using Scirus, which is also linked on the CBU Databases page. Scirus is a comprehensive science-specific search engine available on the Internet. Designed for heavy research, it covers 167 million web

Continued on page 4, Science



*Have a Happy Thanksgiving and Holiday Season!*

## **@Your Library**

### **Renew books @ your library**

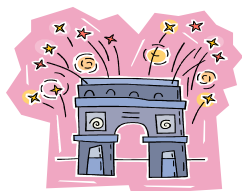
**C**heck out your personal account in the BucCat Library Catalog. Click on My Account.

#### **Just a reminder:**

Graduate students and Undergraduates can check out up to 20 items. However some special items, such as new books, videos, and DVDs, are limited to two items per patron.

## News From the Director:

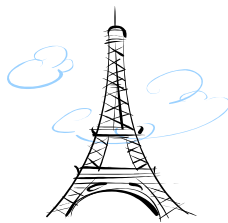
Margaret Cardwell



### A Librarian in Paris

A rare opportunity in the library world has presented itself in the form of my upcoming trip with the Study Abroad students, who will be in Paris over the New Year's holiday. As preparation for writing the research paper component of the Study Abroad course, each student has scheduled an individual conference with me. The students were given basic instruction on the resources available to them in our own library, as well as what is available off campus in the consortium libraries or through Interlibrary Loan. They have been encouraged to find that odd piece of information that piques their curiosity about the sights we will see. Librarians (many of whom are armchair detectives) are always enthusiastic about doing research with students to help them find exactly what they might need for their classes or their own personal needs. We help discover the varied sources that they might use to write their papers. And then we're left hanging – we never see the final product. THIS time, because I will be accompanying the group, at long last, I get to see the synthesis of our work. I'm so looking forward to the trip itself but

most especially to hearing the class presentations.



Eiffel Tower

### Instruction

Benjamin F. Head  
321-4355  
bhead@cbu.edu

#### Instruction Class Reminder

#### Fall Walk-In Instruction Class Encore

The Fall Walk-In Class Instruction encore sessions will be at the times and dates below. Sessions are open to all students on a first-come basis and will be limited to 14 students. The classes will focus on Plough Library and its resources and database research. All sessions will be held in Plough Library's Infolab. For additional information or to enroll (not required) in a class, call 321-3432.

#### Day Students

Monday, Nov. 15, 12:00-12:50pm:  
Finding Journal Articles & More...

Tuesday, Nov. 16, 12:00-12:50pm:  
Finding Journal Articles & More...

Wednesday, Dec. 1, 3:00-4:00 pm:  
Finding Journal Articles & More...

#### Evening Students

Tuesday, Nov. 16, 5:00-5:30 pm:  
Finding Journal Articles & More...

Tuesday, Nov. 30th 5:00-5:30pm:  
Finding Journal Articles & More...

Tuesday, Dec 7th 3:00-4:00pm:  
Finding Journal Articles & More...

### Electronic Resources

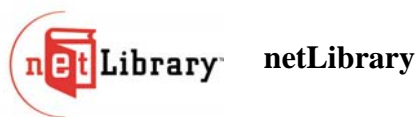
Deborah Babb  
321-3422  
dbabb@cbu.edu



#### Oxford Reference Online: Premium Collection

Oxford Reference Online Premium Collection recently added several new titles and editions, as well as 2000+ color illustrations from the *Visual English Dictionary* in the subjects of Astronomy, Earth, Human Body, Arts & Architecture, Energy, and Science.

New titles and editions include: *The Oxford Companion to American Theatre*; *The Oxford Companion to Canadian History*; *World Encyclopedia*; *The Concise Oxford English Dictionary*; *A Dictionary of Biology*; *A Dictionary of Chemistry*; *A Dictionary of Geography*; *The Oxford Dictionary of Modern Quotations*; and *The Pocket Oxford Italian Dictionary*.



While searching BucCat the library's online catalog, you may notice titles with the text "electronic resource" beside them in brackets [ ]. Most of these titles are eBooks accessible through netLibrary. Currently, CBU Library users have access to over 40,000 electronic titles courtesy of netLibrary.

### **How to Access netLibrary eBooks:**

**On-campus:** From the library catalog, you can click directly through to netLibrary titles and view them without a netLibrary account. However, if you want to "check out" a title for 4 hours, you will need to create a free account. You only need to do this once. To create an account, go to the [Create a Free Account](#) link on the upper-right corner of the netLibrary screen.

**Off-campus:** Viewing a netLibrary eBook from a link in the library catalog will require a username and password. If you haven't already created a free netLibrary account on campus, don't worry, because you can do it from off-campus too. To do this, you must go to the library homepage at [www.cbu.edu/library](http://www.cbu.edu/library). Under "Electronic Subscription Resources (Articles & more)", click on "Electronic Books". From the Electronic Books page, select netLibrary and click "Go". The login screen for CBU's proxy server will come up. Type in your email username and password to gain access to netLibrary, where you can then create your free netLibrary account.

Detailed information on using netLibrary is available by clicking the Help tab in the top navigation bar within netLibrary. For additional assistance on accessing netLibrary eBooks on or off campus, please contact the library at 321-3432.

**xreferplus** XReferPlus  
digital reference library



TRIAL DATABASE

Before December 4, take a few minutes to try out XReferPlus (follow the link on the library homepage). XReferPlus is a quick-reference database similar to Oxford Reference Online, but with content from a diverse array of publishers, including Cambridge University Press, Columbia University Press, Elsevier Science, HarperCollins, Harvard University Press, Penguin, and Wiley.

One unique feature of XReferPlus is its ability to organize data from the 2000 U.S. Census, depending on criteria selected by you. To try this, select "Social Sciences" from the subject menu. Next, choose "U.S. Census 2000 State & County Statistical QuickFacts". Experiment with the "Add a column" and "Table options" features. The tables you create can be exported to Microsoft Excel and manipulated further.

### **Staff News**

Margaret Cardwell, Suzanne Mangrum and Deborah Babb recently attended the Tennessee Voyager EndUser Conference at Columbia State Community College in Columbia, Tennessee.

Margaret Cardwell, Elizabeth Jackson, Suzanne Mangrum and Deborah Babb attended the WETALC meeting in October.

### **BucCup**

The Buc Cup coffee and hot chocolate service is back in full swing.

*.50 per cup*

Stop by between 8:00am and 11:00pm and enjoy a cup.



### **University Gallery**



*The Art of Christine Conley  
October 8 - December 3, 2004*

*The Art of Kathryn Jill Johnson  
January 7 - February 18, 2005*

*The Art of Jana Bernstein  
February 25 - April 1, 2005*

*The Art of Ron Herd*

Continued from page 1  
Science

pages and 18 million full-text articles and abstracts from sources such as ScienceDirect, MEDLINE, Beilstein on ChemWeb, BioMed Central, US Patent Office E-Print ArXiv, Chemistry Preprint Server, Computer Science Preprint Server, Mathematics Preprint Server, CogPrints, and NASA.

Cont. from page 1  
Liaison

Since the initial meetings, there have been numerous contacts through group instruction sessions, individual consulting, policy and procedure clarifications, periodical subscription reviews and more.

The schools and departments had the opportunity to partially fulfill a wish list of material purchases, thanks to a generous grant by the Assisi Foundation in memory of

This relationship is showing promise as a vehicle to fine tune our collection development procedures.

## New Books in Library Collection

These new book titles are a reflection of our times. Just recently, our Secretary of State visited Mexico's President Fox to

discuss immigration and economic issues. **Mexico Under Fox**

Call number: 972.08  
M49  
2004

Recently, some governments of officials have been accused of lying. **Why We Lie: The Evolutionary Roots of Deception and the Unconscious Mind**

By: David Smith  
Call number: 153.6  
S65  
2004

Our schools are frequently accused of failing in their efforts to turn out graduates who have a command of the English language. **The Little Red Writing Book: 20 Powerful Principles of Structure**

By: Brandon Royal  
Call number: 808.042  
R69  
2004

Men are always being accused, by women, of having an ego out of proportion with their abilities. **Why Men Won't Ask for Directions: The Seductions of Sociobiology**

By: Richard Francis  
Call number: 155.7  
F73  
2004

Ancient civilizations are often said to have had wisdom that has been lost, but in the case of origami it has been rediscovered. **Origami Design Secrets: Mathematical Methods for an Ancient Art**

By: Robert Lang  
Call number: 736  
L36  
2003

In December, several of our faculty, staff and students will be off to France. I would recommend that they read **France: The Essential Guide to Viewing Art in Paris and its Surrounds**

By: Bill Hannan  
Call number: 709.44  
H36

Latin America is fast becoming a popular vacation spot for us North Americans. Check out your destination before you go.

**Latin American Democracies in the New Global Economy**

Call number: 330.98  
L38  
2003

## Plough Library Fall Exam Schedule: We Give you More Time

Beginning Monday, December 6, 2004, Plough Library will begin its extended hours. The schedule will be:

Mon-Thur — 7:45 am-12:00 am  
Fridays \_\_\_\_\_ 7:45 am-4:30 pm  
Saturdays—— 12:00 pm-4:00 pm  
Sundays—— 2:00 pm-12:00 am

Friday Dec. 17th, 7:45 am-8:00 pm  
Sat. Dec. 18th, 11:00 am-3:00 pm