

Christian Brothers University

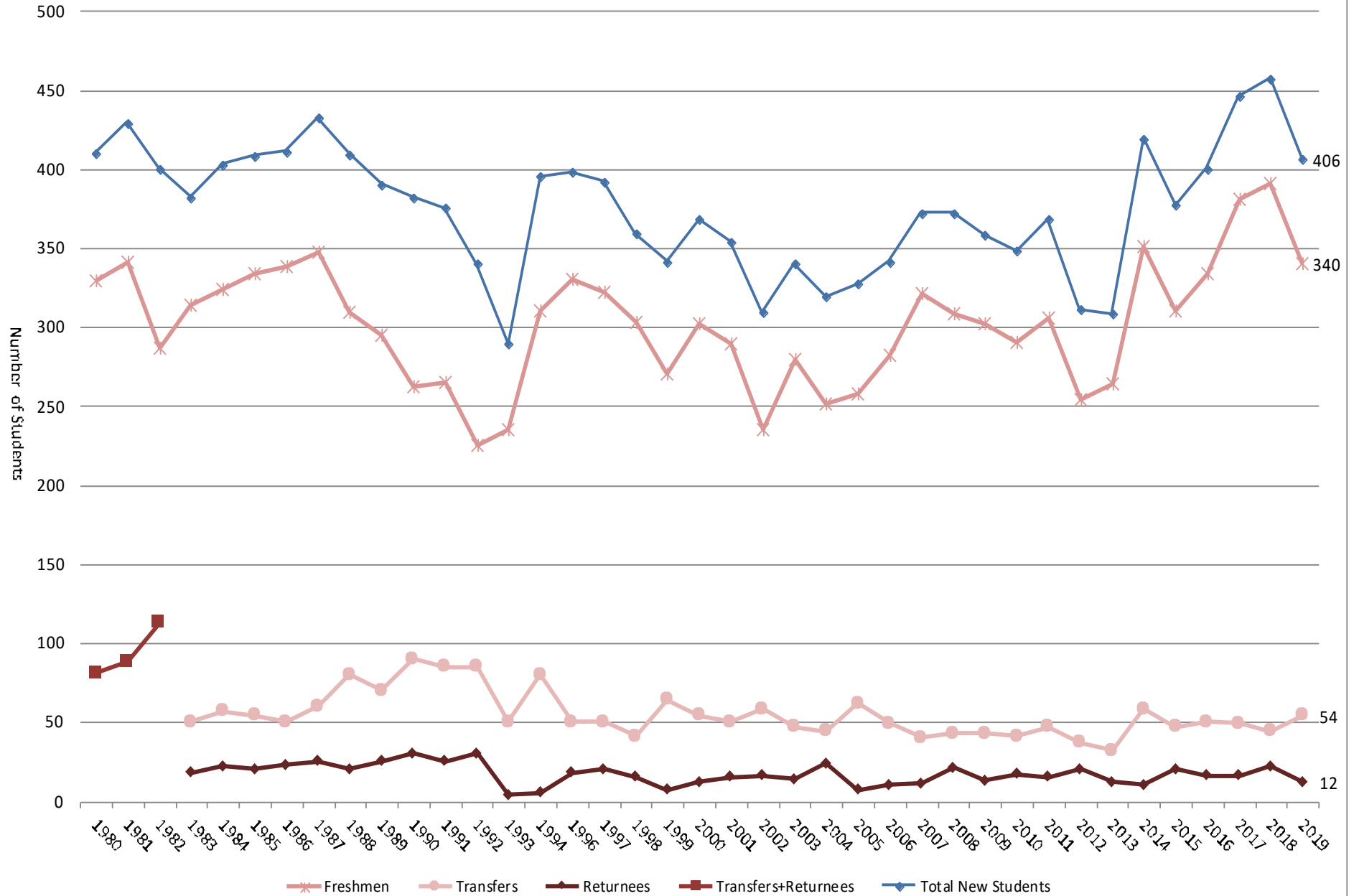


Enrollment Statistics

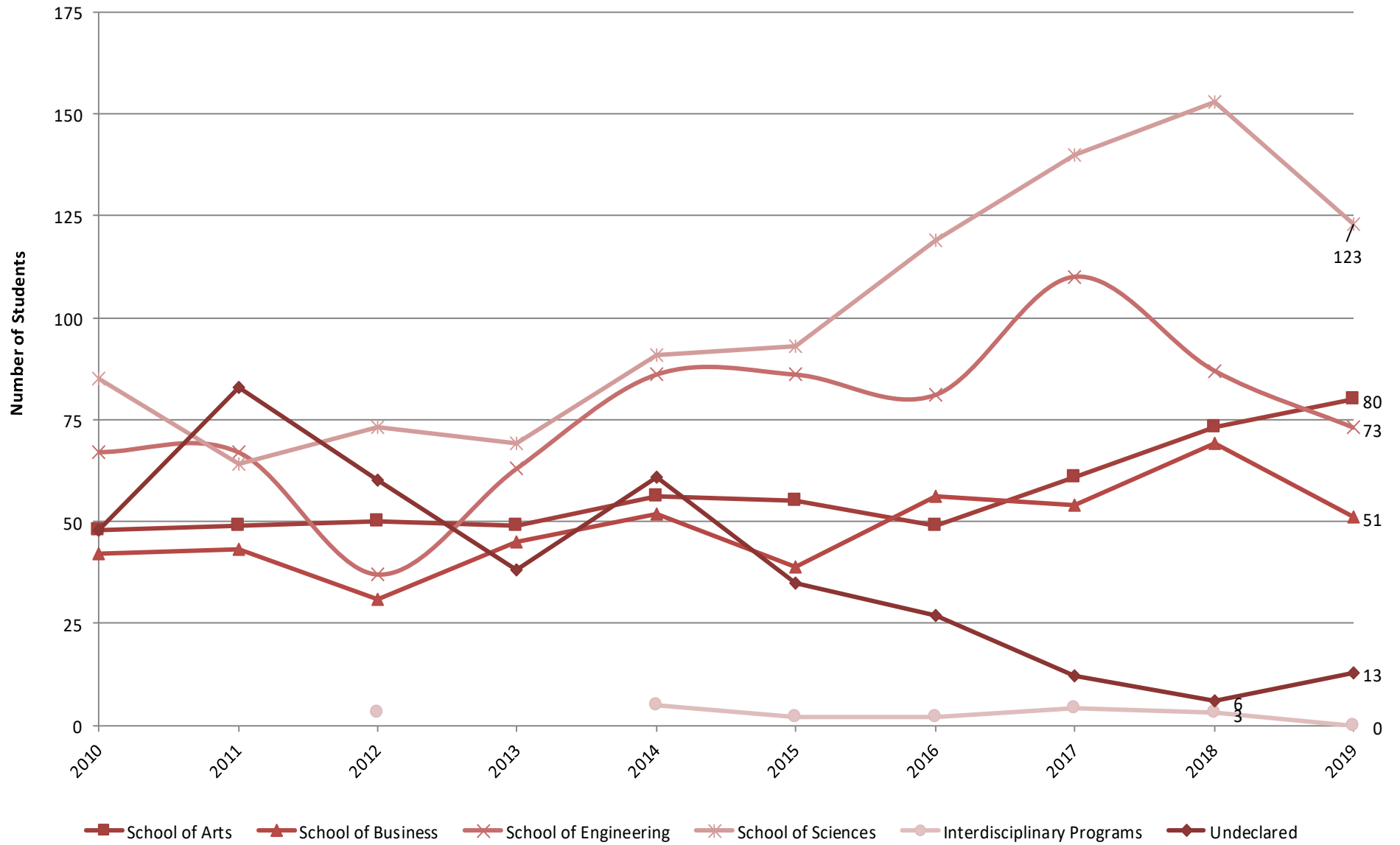
2019-20

New Fall Day Undergraduate Students

1980-2019

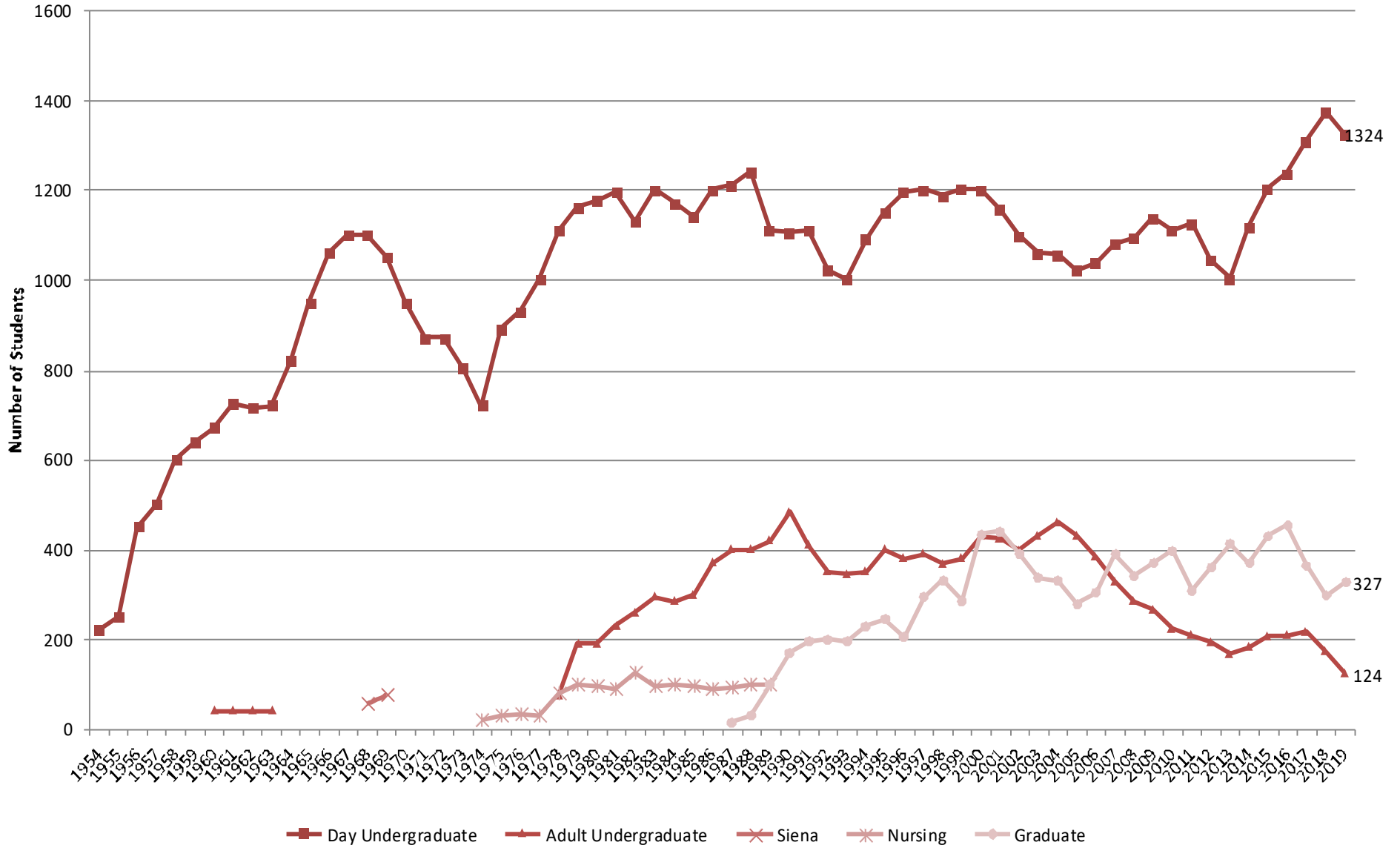


Day Undergraduate First-Time Freshman by School Fall 2010-2019



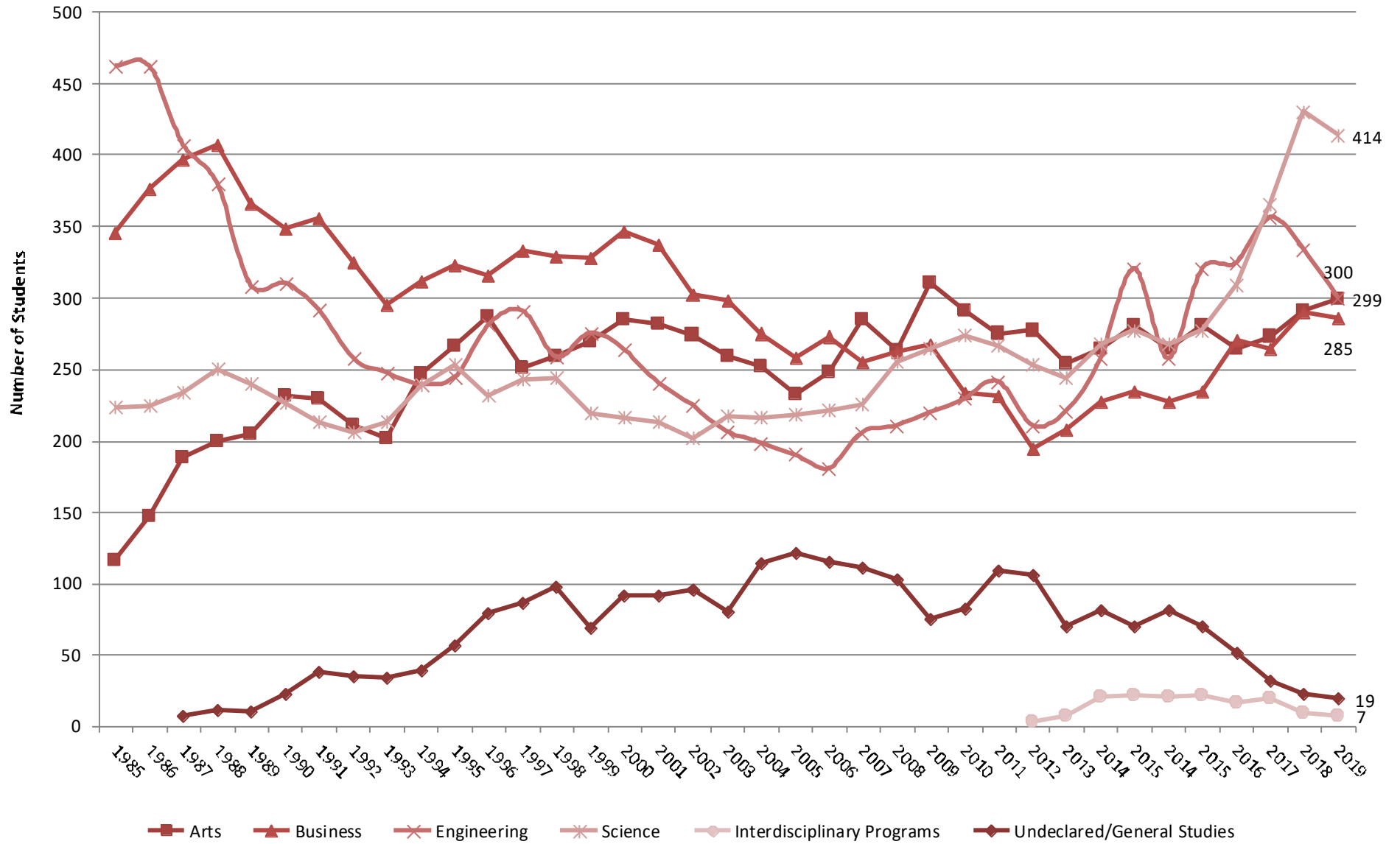
Fall Enrollment by Program

1954-2019



Day Undergraduate Enrollment by School

Fall 1985-2019



Total Enrollment by School - Fall 2011-2019

<u>SCHOOL</u>	<u>2011</u>	<u>2012</u>	<u>2013</u>	<u>2014</u>	<u>2015</u>	<u>2016</u>	<u>2017</u>	<u>2018</u>	<u>2019</u>	<u>2018-19 %CHANGE</u>
SCHOOL OF ARTS	523	530	470	416	403	357	355	380	377	-0.79%
SCHOOL OF BUSINESS	426	359	404	382	359	392	409	407	385	-5.41%
SCHOOL OF ENGINEERING	275	244	252	285	432	516	491	396	390	-1.52%
SCHOOL OF SCIENCES	292	345	365	403	424	396	399	468	466	-0.43%
INTERDISCIPLINARY PROGRAMS		3	7	20	20	16	19	9	7	-22.22%
COLLEGE OF ADULT PROFESSIONAL STUDIES				77	127	153	183	157	121	-22.93%
Undeclared/General Studies	109	101	66	80	69	47	27	12	16	33.33%
Non-Degree Seeking	16	16	20	7	8	21	9	15	13	-33.33%
GRAND TOTALS	1,641	1,598	1,584	1,670	1,842	1,898	1,892	1,844	1,775	-3.74%

Total Enrollment - Fall 2011-2019

<u>FALL</u>	<u>ENROLLMENT</u>	<u>%CHANGE</u>
2011	1,641	-5.20%
2012	1,598	-2.62%
2013	1,584	-0.88%
2014	1,670	5.43%
2015	1,842	10.30%
2016	1,898	3.04%
2017	1,892	-0.32%
2018	1,844	-2.54%
2019	1,775	-3.74%

Total Headcount Enrollment Comparison

Fall 2010-2019

