



CPH

CHRISTIAN BROTHERS UNIVERSITY
college panhellenic

Panhellenic Recruitment Guide

2021



Your journey begins here . . .

Table of Contents

Contact Information

Welcome From Panhellenic

Welcome From the Office of
Student Engagement

What is Panhellenic?

Sorority Terms

Core Values

Gamma Chi's

Why go Greek?

Your First Year

Recruitment Schedule

What to Expect

Alpha Xi Delta Chapter Info

Zeta Tau Alpha Chapter Info

PNM Bill of Rights

Tips for PNM's



Contact Information

Panhellenic President

Faith Bachelor

(901) 647-1612

cbu.panhellenic.president@gmail.com

VP of Recruitment

Safa Alcherif

(901) 628-9487

cbu.panhellenic.recruitment@gmail.com

Assistant VP of Recruitment

Avery Ellis

(662) 671-1881

cbu.panhellenic.recruitment2@gmail.com

VP of Communications

Ellie Navarre

(901) 395-4702

cbu.panhellenic.interpersonal@gmail.com

Panhellenic Advisor

Kim Tilus

(901) 321-3539

ktilus@cbu.edu



Welcome from Panhellenic

Dear Potential New Member,

We are so excited you are taking the first steps to becoming a part of Christian Brothers University Greek Life! We look forward to getting to know YOU and guiding you through the recruitment process.

Your decision to participate in recruitment is the first step to lifelong membership in an organization. We know you will create memories and friendships that last beyond your college years and we hope you participate in the many leadership opportunities that Greek Life has to offer. Joining a sorority is an opportunity to become a part of something bigger than yourself.

We hope you choose to become our Panhellenic Sister by the end of your recruitment week! Welcome and HAVE FUN!

Faith Bachelor
Panhellenic President

Safa Alcherif
VP of Panhellenic Recruitment



Welcome from the Office of Student Engagement

Dear Potential New Member,

Congratulations on choosing to be a part of one of the most prominent inter-families on the Christian Brothers University campus- Greek Life. The Greek Life community has over 150 students! Specifically, in our Panhellenic community, the Alpha Xi Delta and Zeta Tau Alpha women strive daily to excel academically, engage in community service, and create dynamic sisterhoods. I hope throughout the recruitment journey you find where you can flourish and find your Greek Life sorority.

The Office of Student Engagement serves as a liaison between students, community members, and national greek organizations. Dedicated to leadership and academic success, we believe wholeheartedly in the transformational power of Greek Life. Ultimately, we hope that you not only meet many new faces but that this opportunity provides you with the foundation to join our vibrant and ever-growing Greek Life family!

If you have any questions as you embark on this next chapter in your life, please do not hesitate to reach out to me with any questions about our community, the Office of Student Engagement, or the formal recruitment process.

In Greekdom,

Kim Tilus
Director of Student Engagement



What is Panhellenic Council?

The Panhellenic Council is the governing body for both NPC sororities on the Christian Brothers University campus. Once a woman joins a sorority, she becomes a member of Panhellenic. Panhellenic is a way to unite women regardless of their affiliation. Each sorority has a delegate that serves as the liaison between their sorority and the Panhellenic Council. The council is led by executive members and their advisors who oversee all programs.

Panhellenic works together to:

- *ensure the Greek community has a positive influence in the community
- * serve our overall sorority system
- *promote a unified sorority system
- *promote positive relationships among our sorority chapters and their members
- *promote and grow our sorority community.



Sorority Terminology

Alumna: One female graduate.

Alumnae: Two or more female graduates.

Badge: An insignia of fraternity or sorority membership worn only by initiated members.

Bid: An invitation to join a fraternity or sorority.

Bid Day: The last day of recruitment, when potential new members receive bids to join chapters and become new members.

Big sister: A collegiate member who is paired with a new member to act as a mentor.

Chapter: A campus-based organization of a national or international sorority or fraternity organization.

Chapter meeting: Typically weekly meetings where members gather conduct all official chapter business.



Sorority Terminology

Collegiate member: A collegiate, initiated member of a sorority chapter.

Crest: Insignia used by sorority or fraternity members, usually reserved for initiated members only. Each crest has hidden, secret meanings. Also known as a coat of arms or shield.

Dues: Monetary cost of sorority membership that are used to cover costs of operation and events.

Gamma Chi: Members of Panhellenic sororities who are disaffiliated in order to be unbiased recruitment counselors.

Initiation: A traditional ceremony that brings a new member into full membership of a sorority.

Legacy: A daughter, sister or granddaughter of an initiated member of a sorority.

Membership education: This refers to educational sessions where a new member might learn about the founding of the sorority, open mottoes, founders, colors of the organization and more.



Sorority Terminology

MRABA: Stands for "Membership Recruitment Acceptance Binding Agreement" which is filled out by a Potential New Member on Preference Night on which the PNM agrees to accept a bid from any chapter she lists on her MRABA.

National Panhellenic Conference (NPC): The conference composed of 26 national women's fraternities, each of which is autonomous as a general, Greek-letter society of college women, undergraduates, and alumnae.

New Member: A woman who has accepted a bid from a sorority but is not yet an initiated, active member of that chapter.

New Member Educator: A liaison between the new members and the chapter who is responsible for implementing and monitoring the new member program and preparing the new members for initiation.

Panhellenic Council: The local collegiate governing body of sororities associated with National Panhellenic Conference.



Sorority Terminology

Philanthropy: Charitable projects connected with local or national causes. Each sorority has a philanthropy cause they adopt and support throughout the year.

Potential New Member (PNM): A woman who is eligible to participate in recruitment.

Recommendation/Reference: A form completed by an alumna member of a sorority recommending a potential new member for membership.

Recruitment: Process of recruiting new members.

Ritual: The private traditions and practices of a sorority deeply rooted in the shared values and purpose of the members. Ritual serves as a reminder to each member of her responsibilities and inspires her to fulfill them. Rituals connect the past with the present and the future.



Sorority Terminology

Sister: The term used by members of a sorority when referring to other members of their organization.

Sorority/Fraternity: A group of women or men who are bound together by ritual ties, beliefs, common goals and values.

Symbols: Each member organization has different symbols like a mascot or a flower that the sorority values. Many of the reasons why these things are values are learned through ritual services.



Core Values

Scholarship

Sororities were founded for exceptional scholarship. At CBU, our chapters provide academic support, community-based study hours, and connections to on-campus resources.

Service

Sororities recognize the importance of giving their time, talents and financial support to philanthropic organizations. Each chapter provides aid to their own philanthropy.

Leadership

Sorority membership is a catalyst for on-campus involvement. The Greek Life experience provides leadership development opportunities to help members attain their goals.

Sisterhood

Joining the CBU Panhellenic Council means having support from over 100 students. Sororities offer new friends, life-long bonds, and invaluable experiences that will last beyond your college years.

Panhellenic Creed

We, as Undergraduate Members of women's fraternities, stand for good scholarship, for guarding of good health, for maintenance of fine standards, and for serving, to the best of our ability, our college community.

Cooperation for furthering fraternity life, in harmony with its best possibilities, is the ideal that shall guide our fraternity activities. We, as Fraternity Women, stand for service through the development of character inspired by the close contact and deep friendship of individual fraternity and Panhellenic life. The opportunity for wide and wise human service, through mutual respect and helpfulness, is the tenant by which we strive to live.

Meet The Gamma Chi's !



Faith Bachelor



Safa Alcherif



Avery Ellis



Ellie Navarre



Why Go Greek?

1. Participation in Campus Activities

From student government to intramural sports, Greek members play a large part in the activities and other various clubs.

2. Working with a Diverse Group of People

By being involved in a Greek organization, you'll have the opportunity to work with an exciting group of people—from campus administration to local community leaders.

3. Scholarship Opportunities

There are many opportunities for scholarships through national and international organizations, as well as, the local chapters.

4. Preparation for Future Career Choices

Chapter offices offer the real-world experience that will help you stand out among other college graduates.

5. Social Life

Greeks work hard to keep their chapters running and their grades high, but they still find time for social events throughout the year. Many friendships and connections are made with fellow students at CBU. Planning social events teaches many aspects of preparing for large events and managing the risks involved.



Why Go Greek?

6. Leadership Opportunities

The Greek Community affords members the opportunity to work in a group environment. Because each chapter is self-governing and relies on the skills of its members for successful management, members have the chance to serve in a wide range of leadership roles. To get involved on campus and sharpen your leadership skills, membership in a sorority is a great place to begin.

7. Increased Community Awareness

Through philanthropic involvement and community service projects, Greek members take pride in helping others. Sororities promote ideals that will enhance a member's college experience through support of local and national philanthropies.

8. Great Friendships

Joining a Greek organization means becoming part of a group with diverse characteristics, but with one common goal. Friendships are made through your college years and beyond.

9. Higher GPA

Greek letter organizations were founded on the principle of successful scholarship. This value is reflected in that CBU Greek students regularly perform above the all-student GPA averages.

10. More Rewarding College Experience

The Greek Experience is about being a part of a value system where all strive for similar goals and share the same principles and values. A combination of academics, social life, campus involvement, and friendship can make the CBU experience valuable and rewarding.



Your First Year!

New Member Meetings:

New Members are required to attend weekly new member meetings during which you will learn your sorority history and values in addition to weekly chapter meetings. These meetings are great opportunities to bond with and get to know your fellow New Member Sisters!

Study Hall Hours:

New members are required to engage in a certain number of study hours during their first semester of membership.

Philanthropic Work

Each sorority supports its national philanthropy by hosting events throughout the year to raise donations and awareness for their cause.

Active Participation

New members are encouraged to participate in chapter and campus-wide events.



Recruitment Schedule

*The following times are from beginning to end of the overall event each day. You may or may not be required to stay for the entire time listed.

Wednesday, September 22, 2021

5:30 - 6:15 p.m. Orientation
6:15 - 6:45 p.m. Questions/Change Clothes
6:45 - 8:35 p.m. Open House Parties

Thursday, September 23, 2021

5:30 - 5:45 p.m. Introduction
5:45 - 8:20 p.m. Philanthropy Night

Friday, September 24, 2021

5:30 - 5:45 p.m. Introduction
5:45 - 8:05 p.m. Preference Night

Saturday, September 25, 2021

1:45 - 6:00 p.m. Bid Day!

*Inform CBU.PANHELLENIC.RECRUITMENT@gmail.com
if you have an unavoidable scheduling conflict



What to Expect

Orientation/Open House:

Visit 2 sororities - Three 30-Minute Parties

Orientation/Open House is your opportunity to be introduced to recruitment week and is the first time you will meet women from both sororities. This is a time to become acquaintances and introduce yourself, find out who the chapter is, and let them know who you are! You will receive an introduction to the chapter and enjoy some entertainment or an activity. Conversations will be casual. You may meet only one member or 3 to 4, depending on the sorority. Be prepared to talk about where you are from, what activities interest you, what your major might be, where you went to high school, etc.

Outfit Ideas:

You may wear any outfit you feel comfortable in. You will be given time to change before entering the first party.

We recommend you wear nice bottoms and casual shoes. Remember: Your selected outfit should make you comfortable and confident. Always be you!



What to Expect

Philanthropy Night:

Visit 2 sororities - Three 45 Minute Parties

Philanthropy Round allows you to better understand the philanthropies of the sororities and to learn of their activities and what it means to be a sorority woman. Conversations will be relaxed, and you will get another chance to meet more women in each chapter you visit; maximize this opportunity! Again, you may meet four women, or you may only meet one. Be prepared to talk about the chapter's philanthropy, your previous service endeavors, issues you are passionate about, why you chose CBU, what service opportunities you hope to pursue, etc.

Outfit Ideas:

Think casual cute! A sundress, blouse with nice/colored pants, or appropriate length romper with sandals, all would be appropriate dress options.

Remember: Your selected outfit should make you comfortable and confident. Always be you!



What to Expect

Preference:

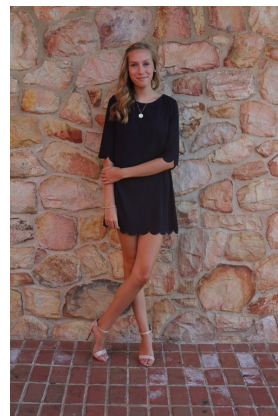
Visit up to 2 sororities - 60 Minute Parties

This is your chance to learn why each member's sorority means so much to them and to get a sense of whether you see yourself as a part of their sorority for life. Conversations will be more serious. You may have one or two girls greet you. Be prepared to hear women speak about what their sorority stands for. Things can get emotional with heart-felt poems, readings, and stories.

Outfit Ideas:

Appropriate dress would include a solid, dark dress or jumpsuit with heels or flats.

Remember: Your selected outfit should make you comfortable and confident. Always be you!



What to Expect

What Follows Preference Round:

After Preference round, you will rank, in preference order, the sororities you attended. If you list all that you attended in the order of preference, there is a high probability that you will receive a bid (invitation to join a sorority).

You will also sign the Membership Recruitment Agreement of Binding Acceptance (MRABA), which outlines Panhellenic policy regarding the acceptance of bids. Your Gamma Chi will give you more information when that time comes.

Mutual Selection:

Remember that sororities are choosing you AND you are simultaneously choosing them. Be optimistic and excited about your options; though it can be challenging, it is so important to keep a positive attitude during Recruitment.



What to Expect

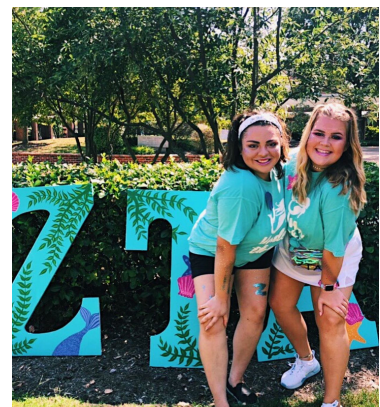
Bid Day:

The day each woman, who receives an invitation of membership from one of our Panhellenic sororities, will run home to their new sisters! Your new sisters will have a celebration planned to celebrate your choice to become a sorority woman.

Panhellenic encourages you to participate in the planned Bid Day activities as long as possible so you can begin to build relationships with your new sisters.

Outfit Ideas:

Wear clothes appropriate for the weather. Bid day will start outside. You are welcome to wear whatever makes you feel comfortable in. Your new home will mostly provide you with a tshirt :).



Alpha Xi Delta

theta pi chapter

National Founding:

1893

Local Founding:

April 30, 1994

Mascot:

BetXi Bear

Colors:

Double Blue and Gold

Flower:

Pink Rose

Open Motto:

The Pen is Mightier Than
the Sword.

Philanthropy:

Kindly Hearts

Initiated Members:

162,000

Number of Chapters:

129



Colors



Badge



New Member
Pin



Mascot



Flower

Alpha Xi Delta

theta pi chapter



Zeta Tau Alpha

iota xi chapter

National Founding:

October 15, 1898

Local Founding:

November 23, 1985

Symbols:

Five Point Crown
Strawberry

Colors:

Turquoise Blue and
Steel Grey

Flower:

White Violet

Open Motto:

Seek the Noblest.

Philanthropy:

Breast Cancer Education
and Awareness.
National Partnerships:
American Cancer Society,
NFL and Bright Pink

Initiated Members:

280,000

Number of Chapters:

257



Colors and Symbol



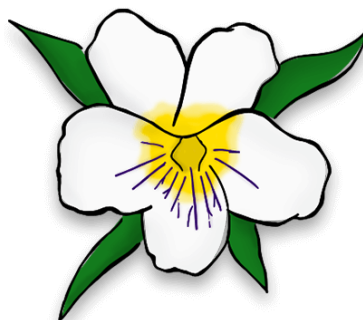
Badge



Symbol



New
Member
Pin



Flower

Zeta Tau Alpha

iota xi chapter



PNM Bill of Rights

- The right to be treated as an **individual**
- The right to be **fully informed** about the recruitment process
- The right to ask questions and receive **true and objective answers** from recruitment counselors and members
- The right to be treated with **respect**
- The right to be treated as a capable and mature person **without being patronized**
- The right to ask how and why and receive **straight answers**
 - The right to **have and express opinions** to recruitment counselors
- The right to have inviolable **confidentiality** when sharing information with recruitment counselors
 - The right to make **informed choices** without undue pressure from others
- The right to be **fully informed** about the NPC Unanimous Agreements implicit in the membership recruitment acceptance binding agreement (MRABA) signing process
- The right to **make one's own choice** and decision and accept full responsibility for the results of that decision
- The right to have a **positive, safe and enriching** recruitment and new member experience



Tips for PNMs

1. Take Notes

on how you felt, what you talked about, and who you met after leaving each event. The notes will help you make your decision later on.

2. Be Interested

regardless of whether or not you think you like the sorority.

3. Be Polite

You are meeting women you may have the opportunity to work with in different capacities over your years at CBU. Build positive relationships.

4. Stay Open Minded

Look at the sorority as a whole, not just based on the few women you meet.

Your greek life experience begins at CBU, but will extend beyond your college days. The chapter you loved one day might not be your favorite the next. There is a reason they still want you to attend events.

5. Ask Questions!

It shows interest and the women want to ensure they answer any questions you may have.

6. Smile!

The chapter women are just as nervous talking to you as you are about talking to them. Stay true to yourself and have fun!

7. Be Brave

Do not be influenced by other's opinions when deciding which sorority you feel is your best fit!

8. Remember

Do not interpret a remark made at an event as an assurance of a bid.

Recruitment is a mutual selection process, but no bid is guaranteed.

9. Sleep

Get plenty of sleep! Recruitment is a fun and exciting few days, so make sure to get your rest so you can enjoy your experience.

10. Be Open

If you have a problem or concern after one of the parties, please talk to a Gamma Chi in private.

